

Valves

ANOTHER
DIMENSION



GATE

SUPER
DUPLEX F53

HASTELLOY
C276

REDUCED
BORE

INCONEL
625

REDUCING

TITANIUM

ANOTHER
DIMENSION

CAST
IRON

DUPLEX
2207

CHECK

SOCKET
WELD

BRONZE

BRASS

RELIEF

DUPLEX
F51

CARBON
F91

STAINLESS
STEEL 316

CARBON
LCC

SUPER
AUSTENITIC F44

BUTT
WELD

LUBRICATED
PLUG

MONEL
400

AIR
OPERATED

linvic

For many years Linvic has been renowned for the supply of pipe, flanges and fittings of a “difficult” nature, with high quality requirements, and with rapid delivery. As a result of demand from our clients internationally, we are now pleased to include valves in our product offering.

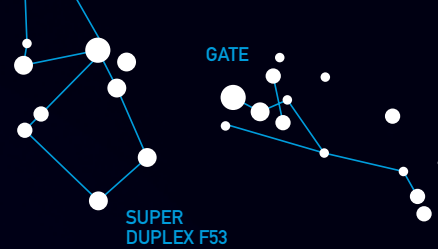
Via relationships with manufacturers and stockists throughout the world, our aim is to offer a prompt quotation for:

- Exactly what you want (specification, material, datasheet)
- To an acceptable quality level
- With a quick delivery

We can't list all the types and materials we can offer. If it's a valve, and it's giving you a problem to source in time...

Try us.





Valve Types

- Gate
- Globe
- Check
- Ball
- Lubricated Plug
- Diaphragm
- Butterfly
- Relief
- Reducing

Features

- Screwed
- Flanged
- Socket Weld
- Butt Weld
- Hub Ends
- Extended Body
- Extended Spindle
- Reduced Bore
- Full Bore
- Gear Op
- Air Operated
- Elec. Operated

Materials

- Carbon A105, LCB, LF2, LCC, F5, F9, F91, WC5
- Stainless Steel 304, 316, 321
- Duplex F51, Duplex 2205

- Super Duplex F53, Duplex 2207
- Super Austenitic F44
- Incoloy 800, 825
- Monel 400
- Inconel 600, 625
- Hastelloy C276
- Titanium
- Brass
- Bronze
- Cast Iron

Ball Valves

- 1, 2 & 3 piece
- Screwed, Weld and Flanged Ends. Wafer Pattern
- Brass, Bronze, Carbon Steel, Stainless Steel, Special Alloy Steels
- Up to Ansi 2500
- Nace
- Firesafe versions
- Floating Ball
- Trunnion Mounting (API 3000 – 15000)
- Cryogenic
- WideRanging Seat Material

Gate, Globe & Check Valves

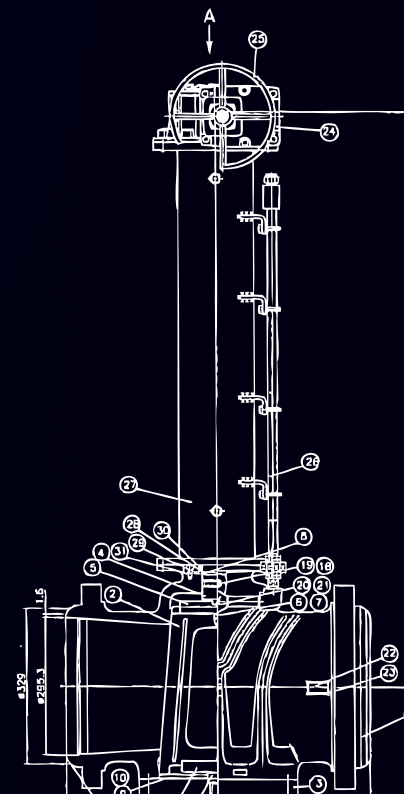
- Forged & Cast in both Carbon & Stainless Steel, Brass & Bronze
- Various TrimOptions
- ANSI 150 – 2500
- Screwed, Flanged and Weld Ends
- Bolted, Welded and Screwed Bonnet
- BellowSealed and Conventional Gland
- Wafer Checks in Dual Plate and Swing also extended body type

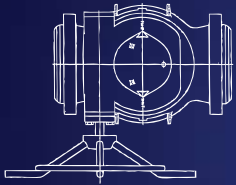
Butterfly Valves

- Wafer, Wafer Lugged and Double Flanged
- CastIron, Cast Steel, Carbon Steel, Stainless Steel and Aluminium Bronze plus a variety of special alloy steels
- Firesafe versions
- Soft & Metal Liners
- Loose liners available

Diaphragm Valves

- DuctileIron, Carbon & Stainless Steel and Chromium Iron
- Unlined or with a variety of body linings
- Various Diaphragm Options, including PTFE, Nat Rubber, EPDM, Nitrile and Vito





linvic

Valve Division
Hickman Avenue
Wolverhampton
West Midlands
WV1 2DW
UK

Tel +44 (0)1902 456333
Fax +44 (0)1902 455856
Email valves@linvic.co.uk

www.linvic.co.uk

AIR
OPERATED

TITANIUM

REDUCED
BORE

HASTELLOY
C276